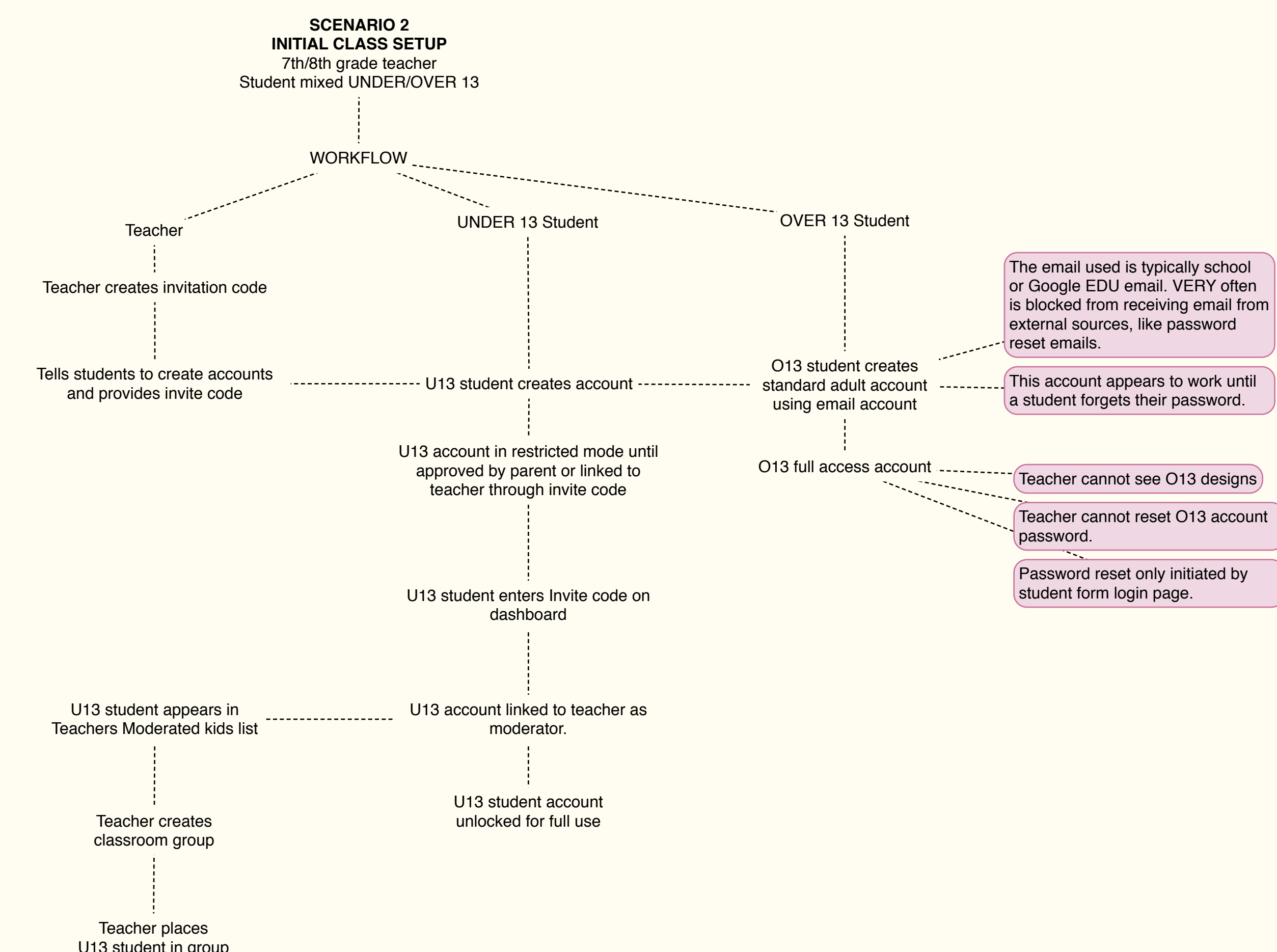


**RESULT**  
Teacher has full moderation of student account  
Teacher can see student design gallery  
Student CANNOT break moderation link

**ISSUES TO RESOLVE**  
Teacher CANNOT break link (must contact adsk)

**SHORT TERM SOLUTION**  
Teachers can create group to hold students until break link is available



**RESULT**  
**UNDER 13 ACCOUNTS**  
Teacher has full moderation UNDER 13 accounts  
Teacher can see design gallery for UNDER 13 accounts  
Student CANNOT break moderation link

**OVER 13 ACCOUNTS**  
Teacher has no ability to reset password for OVER 13 accounts  
Teacher cannot see designs of OVER 13 accounts  
Student IS NOT linked to teacher in ANY way

**ISSUES TO RESOLVE**  
Teacher CANNOT break link (must contact adsk)  
Teacher has no ability to reset password for OVER 13 accounts  
Teacher cannot see designs of OVER 13 accounts  
Student IS NOT linked to teacher in ANY way

**SHORT TERM SOLUTION**  
Teachers can create group to hold students until break link is available

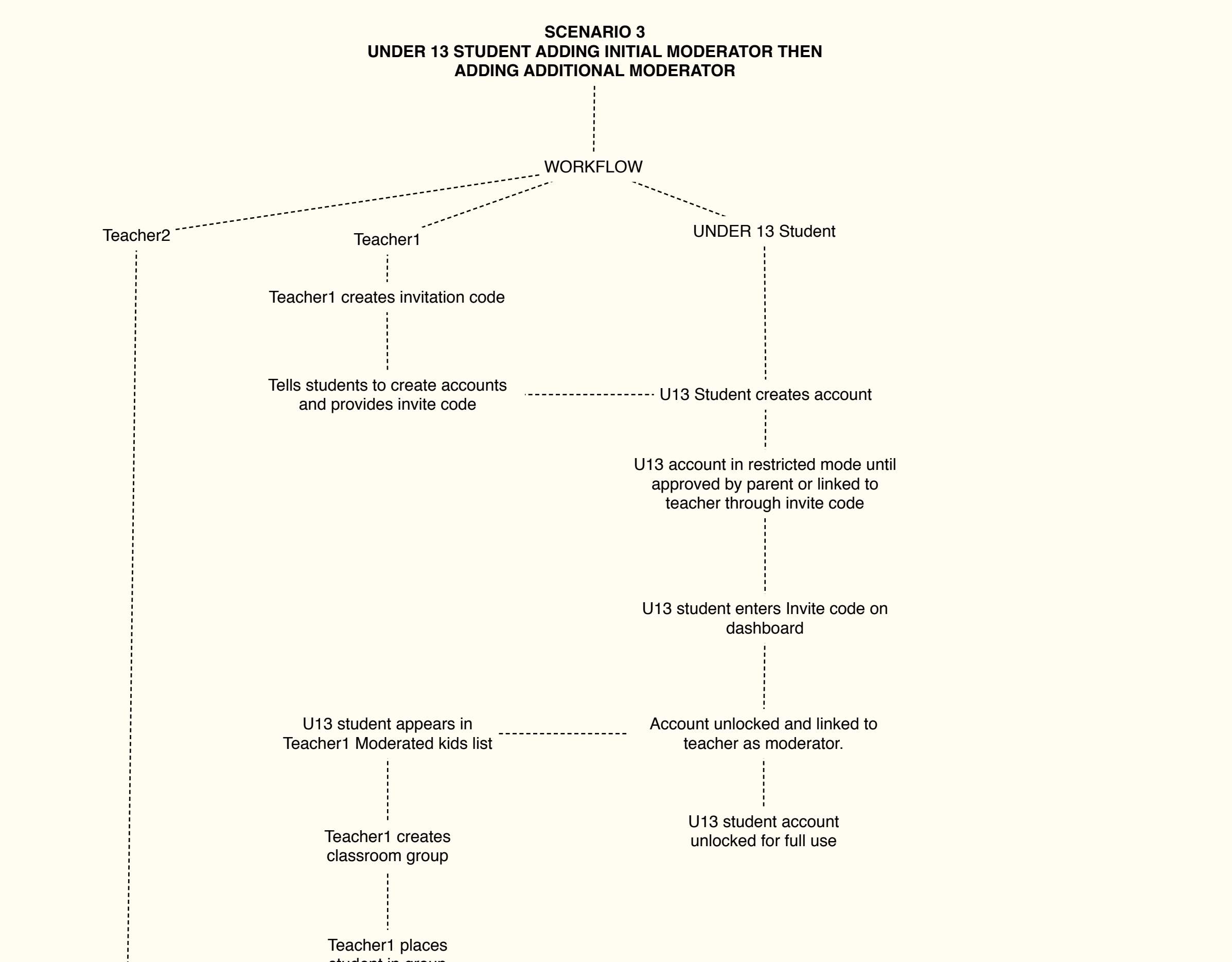
The email used is typically school or Google EDU email. VERY often is blocked from receiving email from external sources, like password reset emails.

This account appears to work until a student forgets their password.

Teacher cannot see O13 designs

Teacher cannot reset O13 account password.

Password reset only initiated by student form login page.



**CLASS ENDS**

Student moves to new class

Teacher1 moves student to archive group, because they can't break link

Teacher2 moves student to archive group, because they can't break link

U13 student already has account

U13 student creates new second account

U13 account in restricted mode until approved by parent or linked to teacher through invite code

U13 student enters Invite code on dashboard

Account unlocked and linked to teacher as moderator.

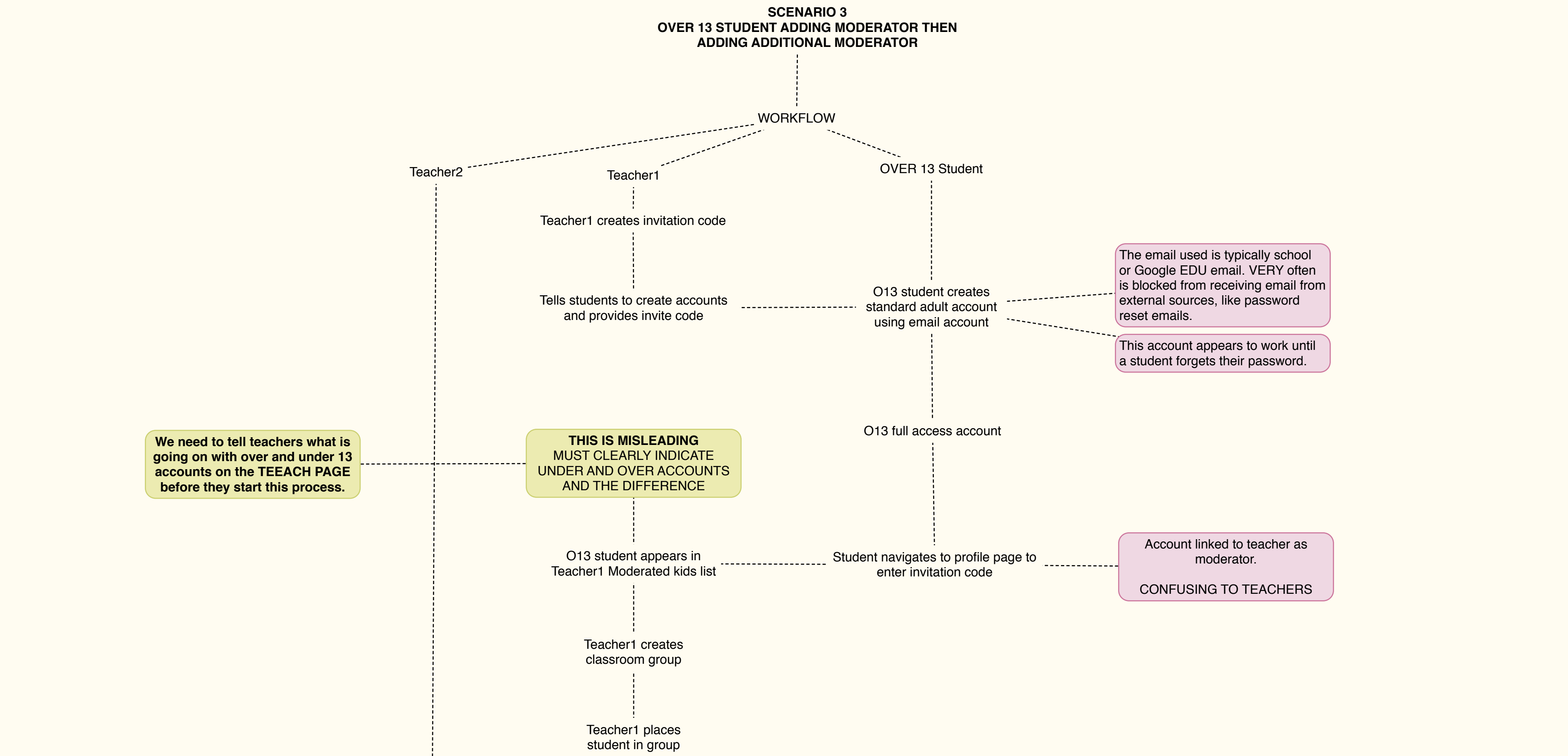
U13 student account unlocked for full use

Old account dies on vine with the students designs

HUGE barrier for teachers as students frequently forget usernames and passwords

Teacher must know there is a difference between under and over 13 accounts

if the student knows their username (heads up they don't) they can initiate password reset and the mail is sent to Teacher1.



**CLASS ENDS**

O13 student moves to new class

Teacher1 moves student to archive group, because they can't break link

Teacher2 moves student to archive group, because they can't break link

U13 student already has account

U13 student creates new second account

U13 account in restricted mode until approved by parent or linked to teacher through invite code

U13 student enters Invite code on dashboard

Account unlocked and linked to teacher as moderator.

U13 student account unlocked for full use

Old account dies on vine with the students designs

HUGE barrier for teachers as students frequently forget usernames and passwords

Teacher must know there is a difference between under and over 13 accounts

THIS IS MISLEADING MUST CLEARLY INDICATE UNDER AND OVER ACCOUNTS AND THE DIFFERENCE

Account linked to teacher as moderator. CONFUSING TO TEACHERS

We need to tell teachers what is going on with over and under 13 accounts on the TEEACH PAGE before they start this process.